



HOUSING ADVOCATE NETWORK • FAMILY PROMISE • MISSOULA WORKS • COMMON GOOD MISSOULA

## **Save the Date!**

MIC's Annual End of Year celebration is going to be different this year! Join us November 9th to learn more and support MIC programs and purchase a delicious pie!




## Missoula Works

DON'T LET THE SNOW  
CATCH YOU BY SURPRISE!


HIRE THE  
GET IT DONE  
CREW

FOR RESIDENTIAL AND  
COMMERCIAL SNOW  
REMOVAL

CALL LEE AT (406) 926-3400  
TO LEARN MORE AND SIGN UP

 MissoulaWorks

HELPING KEEP MONTANANS EMPLOYED



## Housing Advocate Network (HAN)

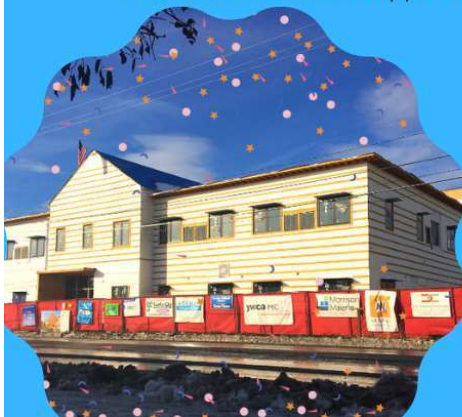
HAN is looking for more advocates! If you are interested, have questions, or want to learn more please reach out to [Zeke](#). Advocates are being matched with families at the Family Housing Center, individuals returning from incarceration, and individuals and families in the community. It is a great way to make a difference in the lives of neighbors in our community as they struggle with housing insecurities.



## MIC at Missoula's Family Housing Center

### WANT TO LEARN MORE ABOUT MISSOULA'S NEW FAMILY HOUSING CENTER?

This spring, Missoula's Family Housing Center, a collaborative project with MIC's Family Promise and the YWCA Missoula, opened its doors. The Family Housing Center is one wing of the YWCA's Meadowlark building, the other two include the YWCA's offices and service center as well as the domestic violence program. Learn more about how you can be involved in Family Promise and MIC's support of the Family Housing Center!



Email us  
[mic@micmt.org](mailto:mic@micmt.org) to  
get involved in the  
MIC programs at the  
Family Housing  
Center!



## Recycling Works

Thank you for your support of Recycling Works! **They reached their goal!** Recycling Works became the official glass recycler of Glacier National Park! This new partnership also means a lot of new glass to



recycle — about a half million pounds of glass will be coming from Glacier annually, on top of the half million pounds we already collect in Missoula each year. **Recycling Works will now be recycling about 1 million pounds of glass per year!**



\*\*\*Recycling works was a program of MIC, but has since become their own nonprofit. Proceeds from Recycling Works go back to support great work in our community, including supporting MIC programs. We appreciate all that you do Recycling Works!

## Partner Updates!

**Bring Home The World's Best Singers!** Holy Spirit Episcopal Church and the International Choral Festival is looking for hosts and supporters for the upcoming 2022 International Choral Festival! Read more about the Festival [Here](#) or visit the [Choral Festival website](#) for more information.



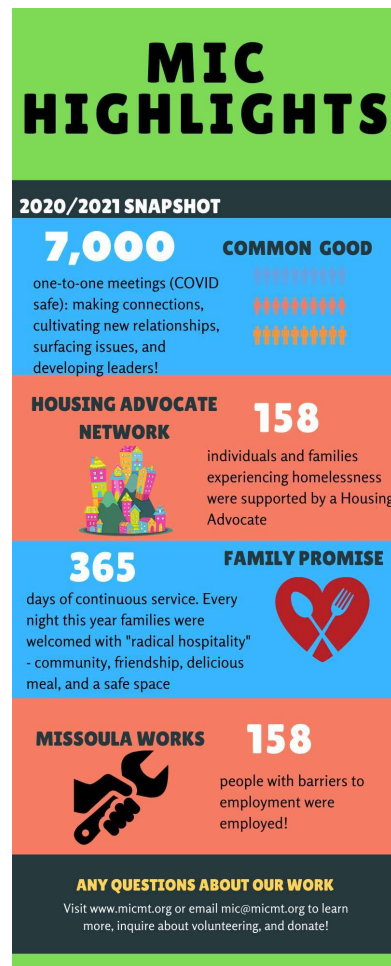
## Stock Gift Donation

We are trying to create multiple ways for donors to support the work of MIC. For some, a stock gift is the quickest and easiest way to support our work. We have shared some helpful information about stock gifts on our website that will hopefully answer any questions that you might have. Check it out!

[Make a Stock Gift](#)

**Thank you for your continuous support of MIC and our programs! Learn more and donate to our programs at [www.micmt.org](http://www.micmt.org)**

MIC's Mission is: "To draw people together across civic, economic, political and religious divides to affect social change and develop public leaders. We exist to strengthen community organizations, generate leaders, and foster meaningful relationships as we act together for the common good."



***Every act of your generosity helps us to further our mission. Thank you for making the world a better place. Love from Family Promise, Housing Advocate Network, MIC's organizing with Common Good Missoula, & Missoula Works.***

### **Our Contact Information**

Missoula Interfaith Collaborative

2205 34th Street

Missoula, MT 59801

406-207-8228

[www.micmt.org](http://www.micmt.org)